

# School Board Meeting

03.13.13

## Design Development Update



# EMERYVILLE CENTER of COMMUNITY LIFE

## Presentation Outline:

1. Design Development (DD) Update Recap
2. Staff Engagement in DD
3. Flexibility in Design







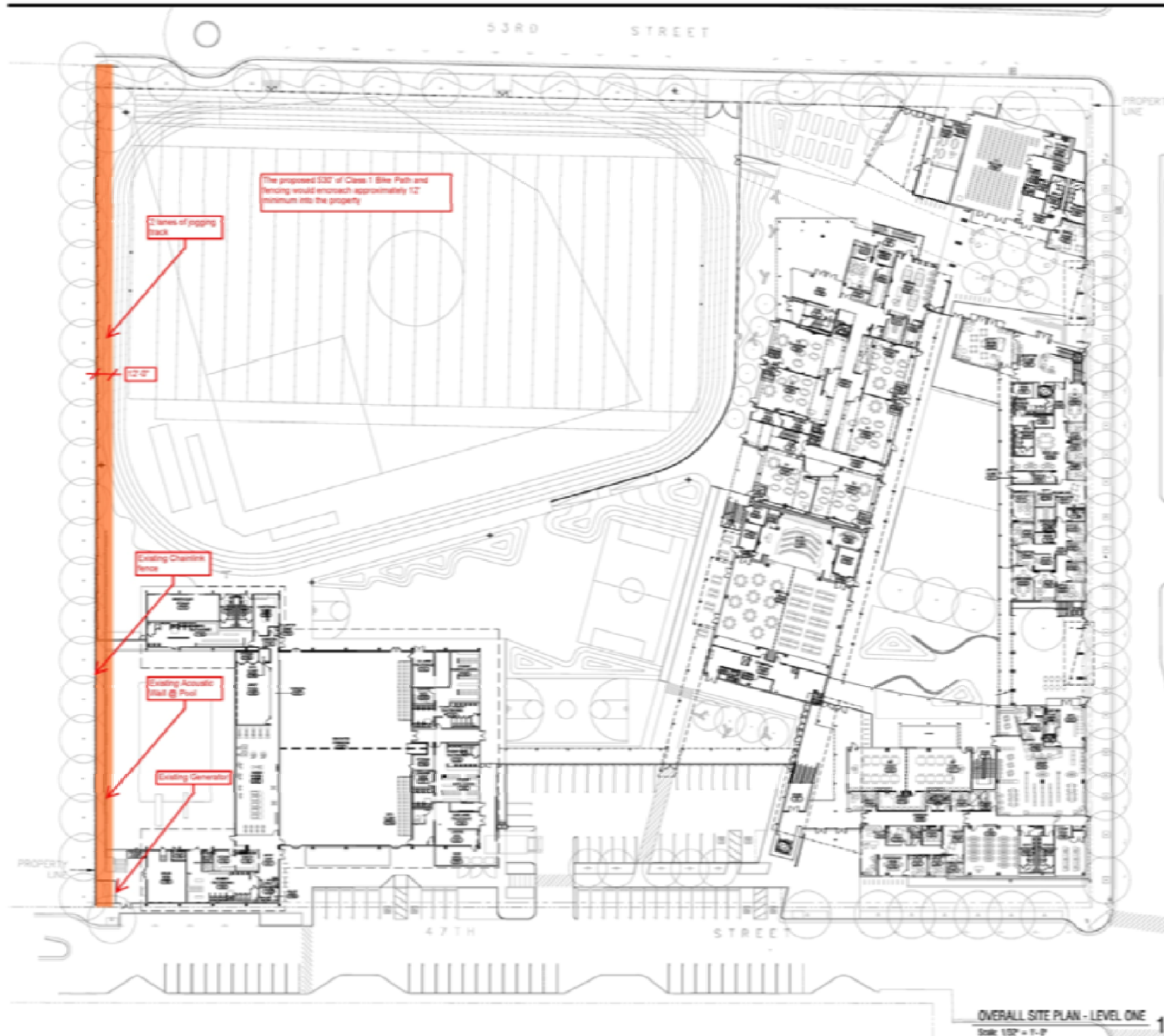
COMMUNITY ENTRY ←

SCHOOL ENTRY ←









**CURRENT**  
03-08-06

nexus partners  
dsk | Concordia | MKThink

SEALED

No. Plan

**dsk**  
architects

301 Nevada Street, Suite 200, San Francisco, CA 94102  
Tel: 415.398.9191 | Fax: 415.398.7584  
info@dskarch.com

CONSULTANT

PROJECT NAME  
Emeryville Center of Community Life

ADDRESS  
1100 47th Avenue  
Emeryville, CA 94608

APPROVALS

CSA PROJECT TRACKING #

BLDG A  
BLDG B  
BLDG C  
BLDG D  
BLDG E

KEY PLAN

NO.	DATE	ISSUES AND REVISIONS
1	03-08-06	REVISIONS TO CURRENT DESIGN
2	03-08-06	REVISIONS TO CURRENT DESIGN
3	03-08-06	REVISIONS TO CURRENT DESIGN
4	03-08-06	REVISIONS TO CURRENT DESIGN
5	03-08-06	REVISIONS TO CURRENT DESIGN
6	03-08-06	REVISIONS TO CURRENT DESIGN
7	03-08-06	REVISIONS TO CURRENT DESIGN
8	03-08-06	REVISIONS TO CURRENT DESIGN
9	03-08-06	REVISIONS TO CURRENT DESIGN
10	03-08-06	REVISIONS TO CURRENT DESIGN

DATE: 03-01-2010  
DRAWN BY: dm  
CHECKED BY: BK

PROJECT NUMBER: 000-120  
SHEET TITLE

OVERALL SITE PLAN  
LEVEL ONE

SHEET NUMBER  
**A1.11**

ALL DRAWINGS AND WRITTEN MATERIAL APPEARING HEREON  
CONSTITUTE A PROFESSIONAL ARCHITECTURAL SERVICE OF THE  
ARCHITECT AND MAY NOT BE REPRODUCED, COPIED, OR  
DISSEMINATED WITHOUT WRITTEN CONSENT OF THE ARCHITECT









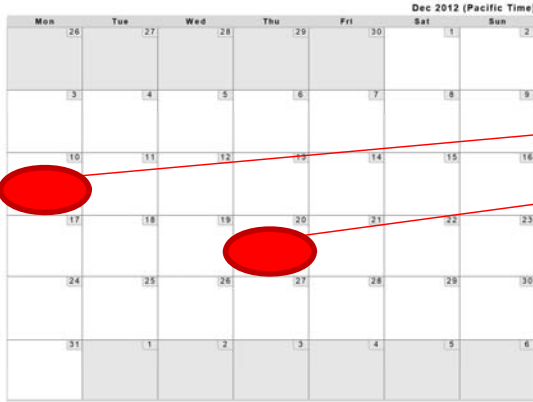
# Bike Path?



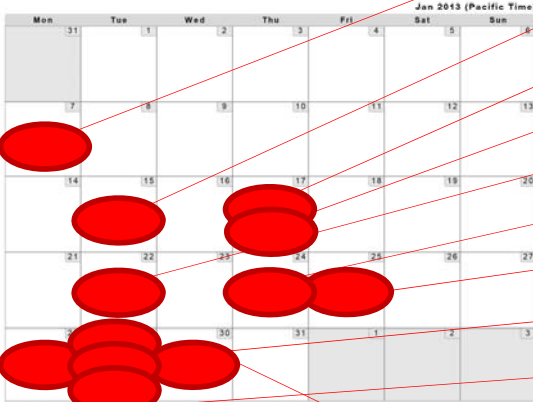
# ECCL – Staff Engagement & Design Process Review



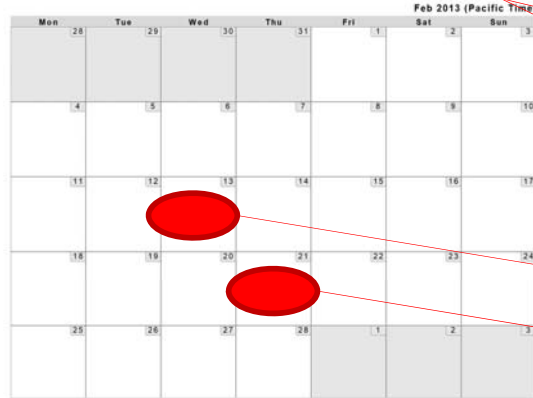
## December



## January



## February



## Focus Meetings

P.E. Teachers  
H.S. Administration

Digital Mock-ups Distributed to Staff  
Community Services Staff

Library Tour

H.S. Art

Elementary School Teachers

Learning Centers

H.S. Music

Elementary Science

H.S. Administration

H.S. Teachers

H.S. Science

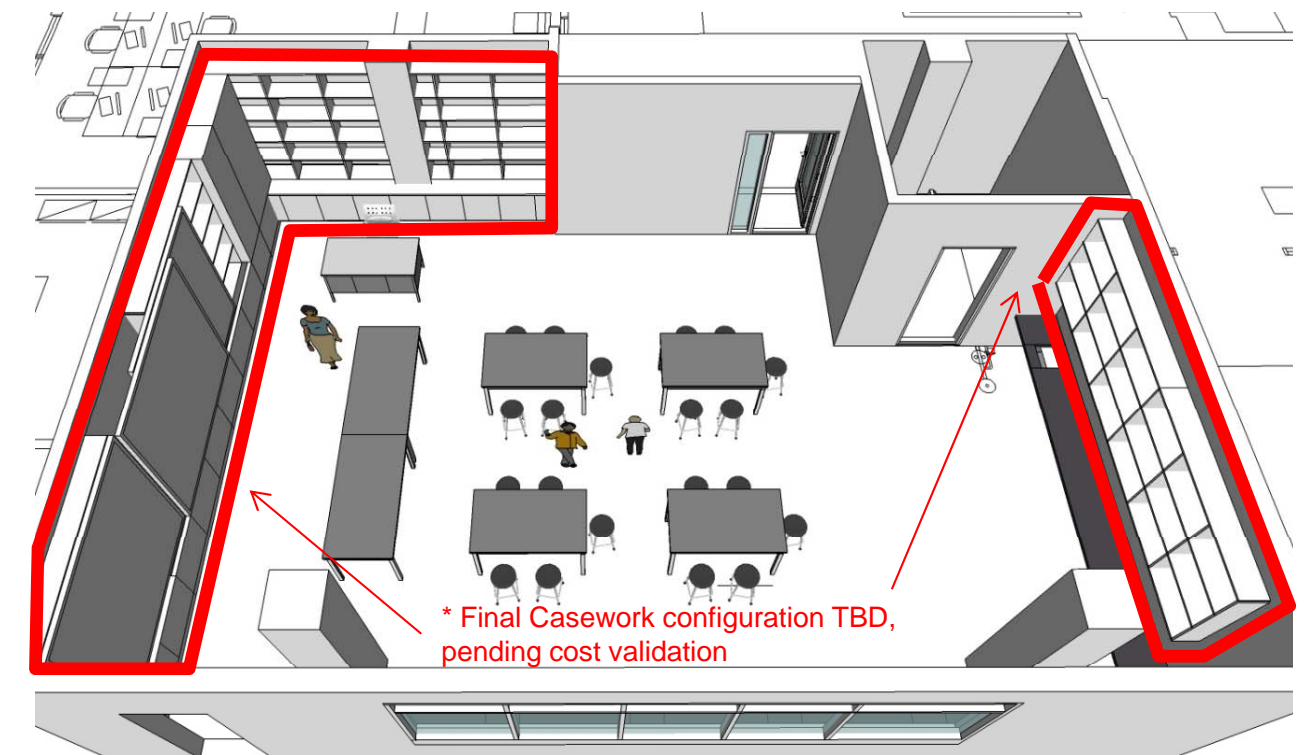
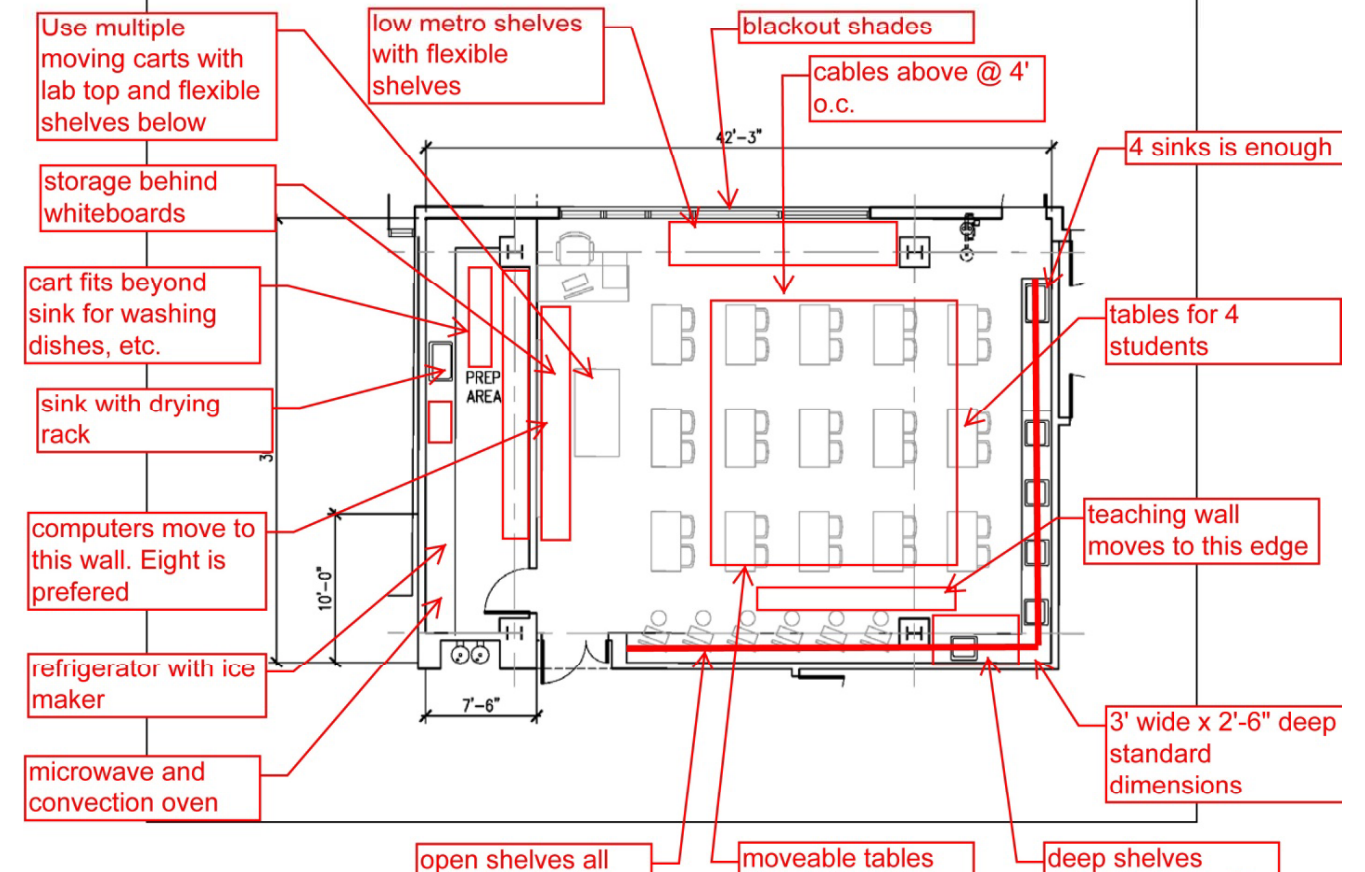
H.S. Gym

Library Tour

IT/Data Staff

H.S. Science

Grades K-8 Science Center Space Prototype





K-5 Science Lab

	Provided Features	User Rankings				
		Good				Not
		1	2	3	4	5
	<b>General Understanding:</b>					
1	K thru 2 science instruction will take place primarily in the classrooms with supplemental instruction in the K-5 Science Lab. K-5 lab furnishing dimensions will be designed for grades 3-5 per NSTA recommendations.					
2	FLUSD will provide Best Management Practices program for dealing with all chemical waste.					
	<b>Finishes:</b>					
3	Floor: Linoleum or similar with rubber base					
4	Walls: paint, tackable surface, casework, aluminum windows					
5	Ceiling: acoustic tile					
6	Door: Solid with view window into classroom					
	<b>Fixtures and Equipment:</b>					
7	24" deep perimeter, plastic laminate work counters @ 36" high and locking storage cabinets with adjustable shelves and secure laptop/ipad storage locker					
8	15" deep upper locking storage cabinets with adjustable shelves @ 18" above counter; solid-faced (no glass)					
9	12" inch deep teaching wall casework with adjustable shelves and sliding whiteboard track					
10	Plastic laminate, lockable, free-standing equipment storage cabinets					
11	All plastic laminate chemical resistant					
12	Computer work area for 6 laptops or ipads					
13	One 15x25x10, stainless steel, single-bowl sink with 6 to 8 foot section of counter at 36" high for teacher's use					
14	15x15x10, stainless steel, single-bowl sinks for student use (5 total)					
15	One 15x15x6 ADA sink/counter					
16	Swiveling, goose-neck, aerated faucets with blade handles					
17	Hot and cold water supply at all sinks					
18	Plaster trap for sinks					
19	Chemical waste piping to exterior of building					
20	Eye-wash/deluge shower					
21	Floor drain					
22	12' wide white board @ 36" high					
23	5'x7' Pull-down projection screen					

1 NEXUS PARTNERS

January 9, 2013

62	Meeting with AYES and ESS PE staff	Mon 12/10/12	Mon 12/10/12
63	Meeting re HS admin and PE/sports program	Thu 12/20/12	Thu 12/20/12
64	Meeting with CS leadership	Tue 1/15/13	Tue 1/15/13
65	Meeting with ESS Leadership	Tue 1/15/13	Tue 1/15/13
66	Meeting re Library	Thu 1/17/13	Thu 1/17/13
67	Meeting re Art Lab	Fri 1/18/13	Fri 1/18/13
68	Meeting with AYES leadership	Tue 1/22/13	Tue 1/22/13
69	Meeting re Learning Center	Thu 1/24/13	Thu 1/24/13
70	Meeting re Student Health Clinic	Fri 1/25/13	Fri 1/25/13
71	Meeting re EUSD Admin	Fri 1/25/13	Fri 1/25/13
72	Meeting re Music	Fri 1/25/13	Fri 1/25/13
73	Meeting re Science Classrooms	Mon 1/28/13	Mon 1/28/13
74	Meeting re ESS campus and gym	Tue 1/29/13	Tue 1/29/13
75	Meeting re Library	Wed 1/30/13	Wed 1/30/13
76	Meeting re Student Health Clinic	Fri 2/1/13	Fri 2/1/13
77	Meeting re IT & Data	Wed 2/13/13	Wed 2/13/13
78	Meeting re ESS Science	Thu 2/21/13	Thu 2/21/13
79	Meeting re Student Health Clinic	Fri 3/1/13	Fri 3/1/13

GRADES K-5 SCIENCE CENTER (6-8 Science-ready Classrooms are similar)

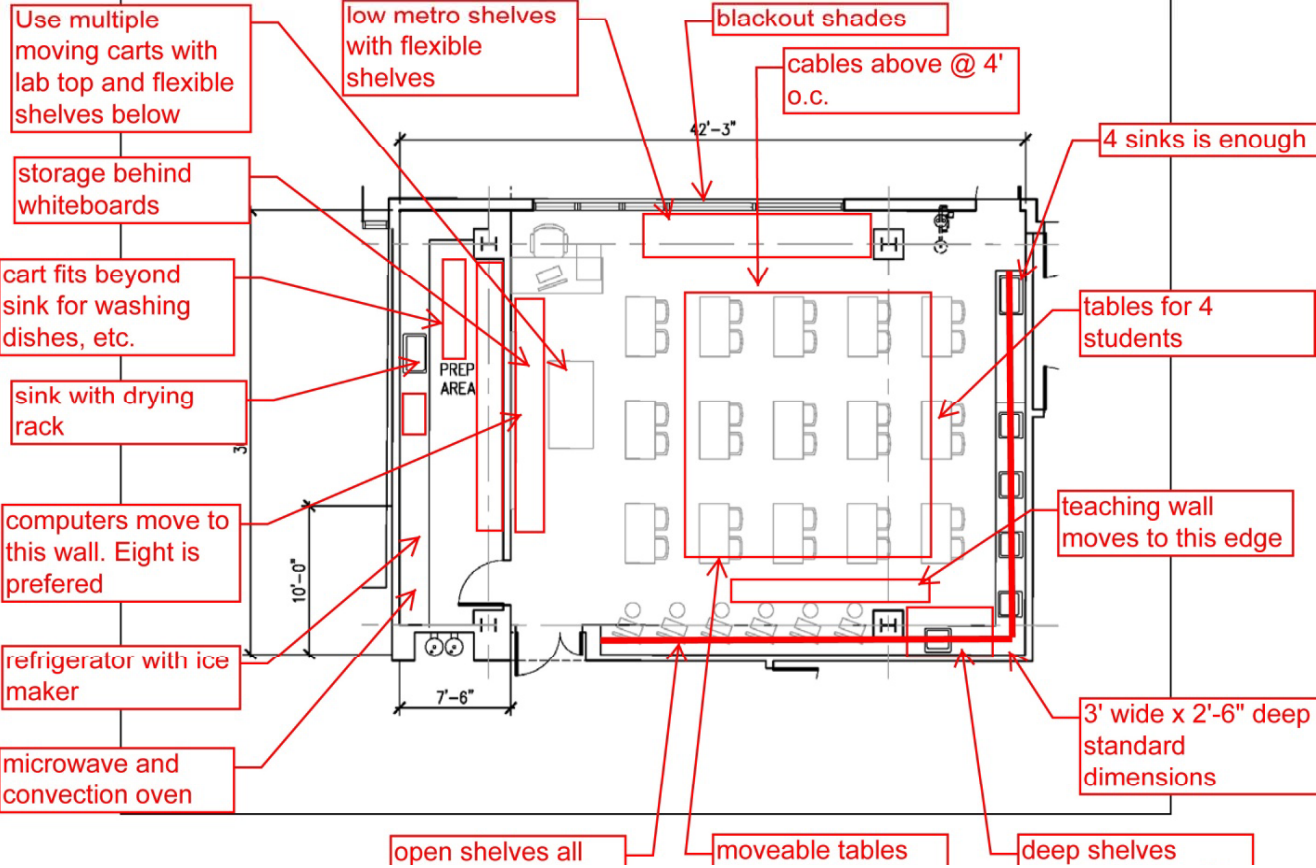
General Information	Program Space ID #	L.16d
	Room #	C-100
	Goals / Use / Function	Provide organized, supervised, and enriching science-based educational activities for Emeryville youth throughout the school day and for community access to lifelong learning opportunities during evening and weekend hours
	Anticipated Use	24/7, using the spaces as broadly as practical to accommodate community learning opportunities.
Finishes / Treatments	Assignable Area Capacity	±1300 sf including Preparation Room
	Key Dimensions	Per Code: 50 sf / occupant = 26 occupants W: variable, 30'-0" min L: variable, 40' max H: 10' min, 11'-12' desired
	Adjacencies	Should be: adjacent to outdoor learning garden and other outdoor learning opportunity spaces.
	Access	Disabled
Engineering Systems	Occupant Load Type	Laboratory (Educational)
	Floor / Base	Chemical resistant linoleum or similar with rubber base
	Walls	Masonry or drywall, tackable surfaces on as much wall areas as possible
	Ceiling	Drywall / Acoustical Tile or combination
Technology	Doors	Solid core wood with vision-lite, lockable
	Natural Light	Natural light. ½ to ¾ height windows
	Acoustics	Mechanical: NC 25, STC at walls: TBD Minimize sound transmission, reverberation
	Special Requirements	Chemical resistant countertops with sink natural gas, compressed air
Technology	Lighting	Fluorescent, 70 fc / 50 fc (50 fc average). Dimming desirable, separate switching for teaching wall illumination
	Electrical	Convenience outlets at the walls and countertop – distributed around full perimeter needed
	Mechanical	Adequate system to heat, cool and ventilate each room under individual control
	Plumbing	Hot and cold water, countertop (ADA) sink (ADA), drinking fountain (ADA)
Technology	Fire Protection	Fire sprinklers, smoke detectors
	Security	Locked Access
	Voice	Wireless phone
	Data	Internet connection / wireless
Technology	TV	Cable outlet
	Other	PA system

18 NEXUS PARTNERS

November 16, 2012

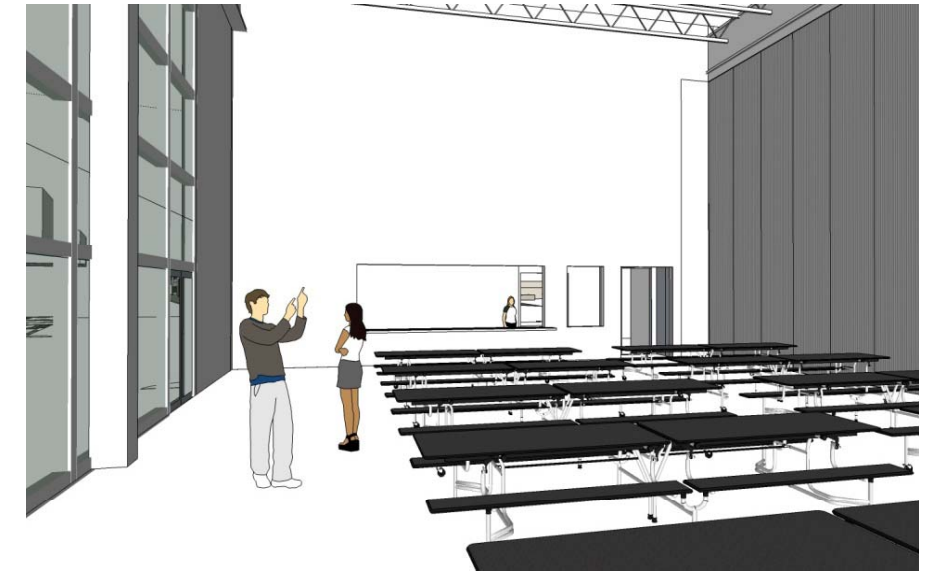
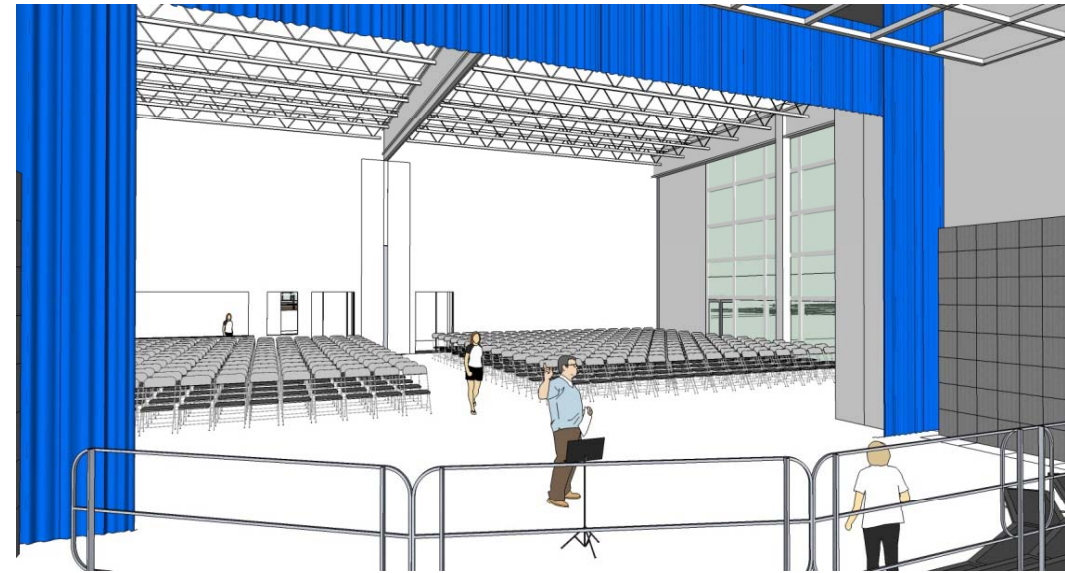
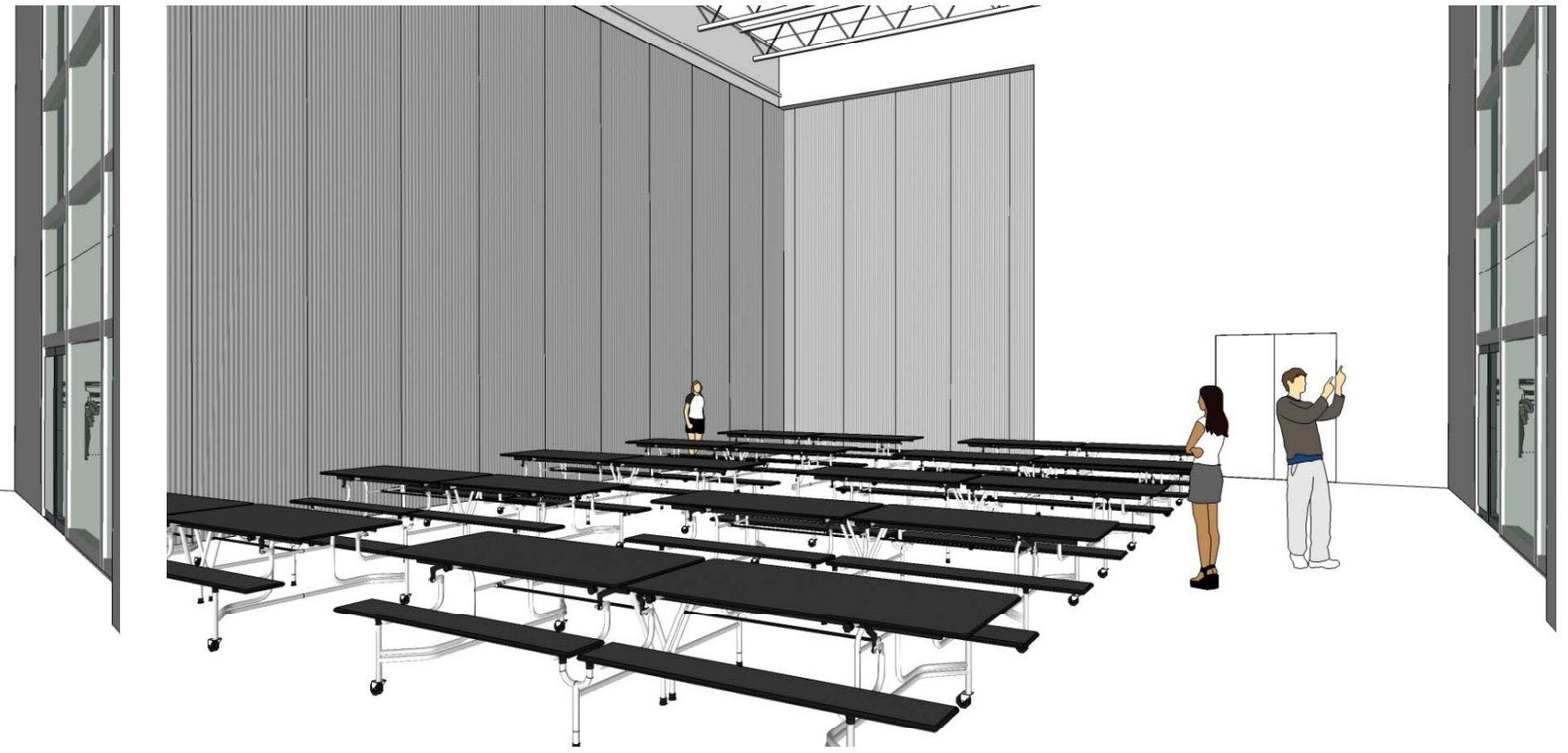
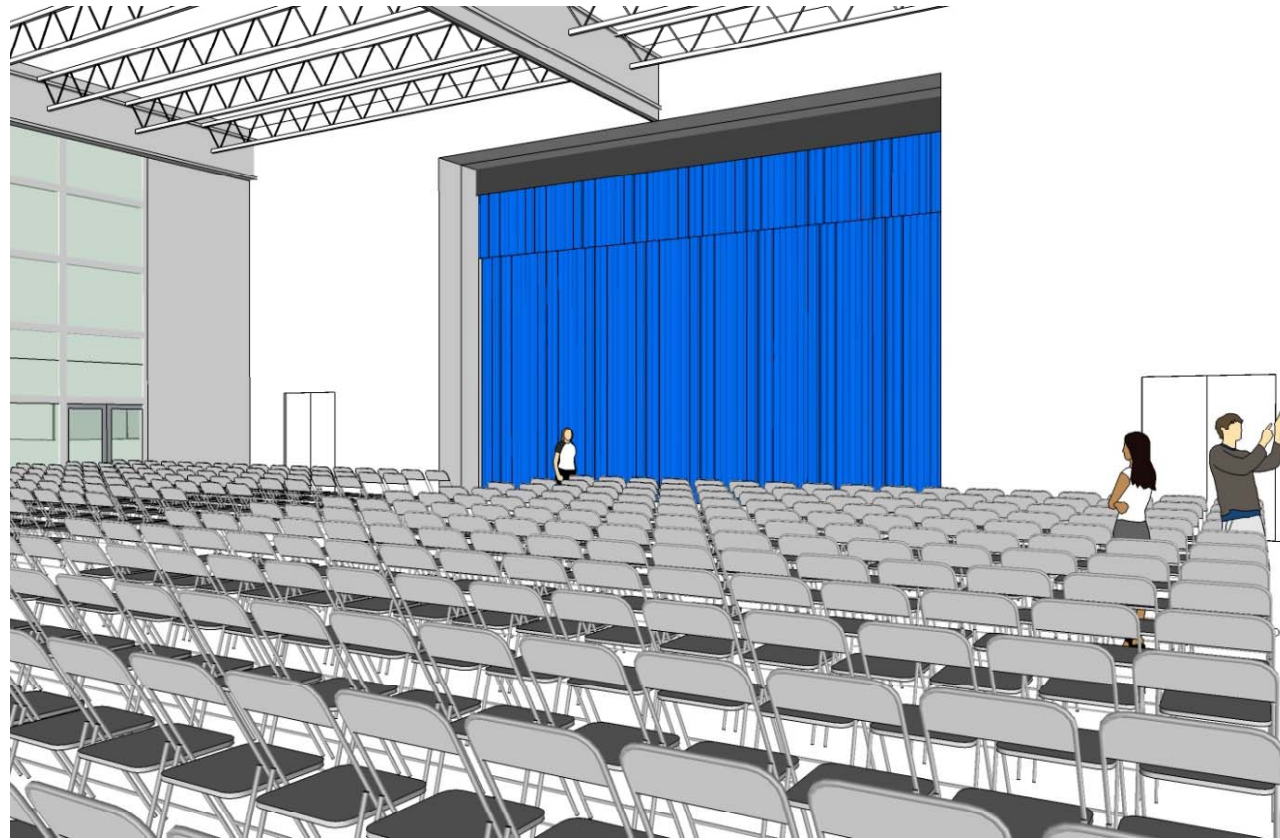
12/10 ♦ Meeting with AYES and ESS PE staff	
12/20 ♦ Meeting re HS admin and PE/sports program	
1/15 ♦ Meeting with CS leadership	
1/15 ♦ Meeting with ESS Leadership	
1/17 ♦ Meeting re Library	
1/18 ♦ Meeting re Art Lab	
1/22 ♦ Meeting with AYES leadership	
1/24 ♦ Meeting re Learning Center	
1/25 ♦ Meeting re Student Health Clinic	
1/25 ♦ Meeting re EUSD Admin	
1/25 ♦ Meeting re Music	
1/28 ♦ Meeting re Science Classrooms	
1/29 ♦ Meeting re ESS campus and gym	
1/30 ♦ Meeting re Library	
2/1 ♦ Meeting re Student Health Clinic	
2/13 ♦ Meeting re IT & Data	
2/21 ♦ Meeting re ESS Science	
3/1 ♦ Meeting re Student Health Clinic	

Grades K-8 Science Center Space Prototype



STAFF ENGAGEMENT - PROCESS

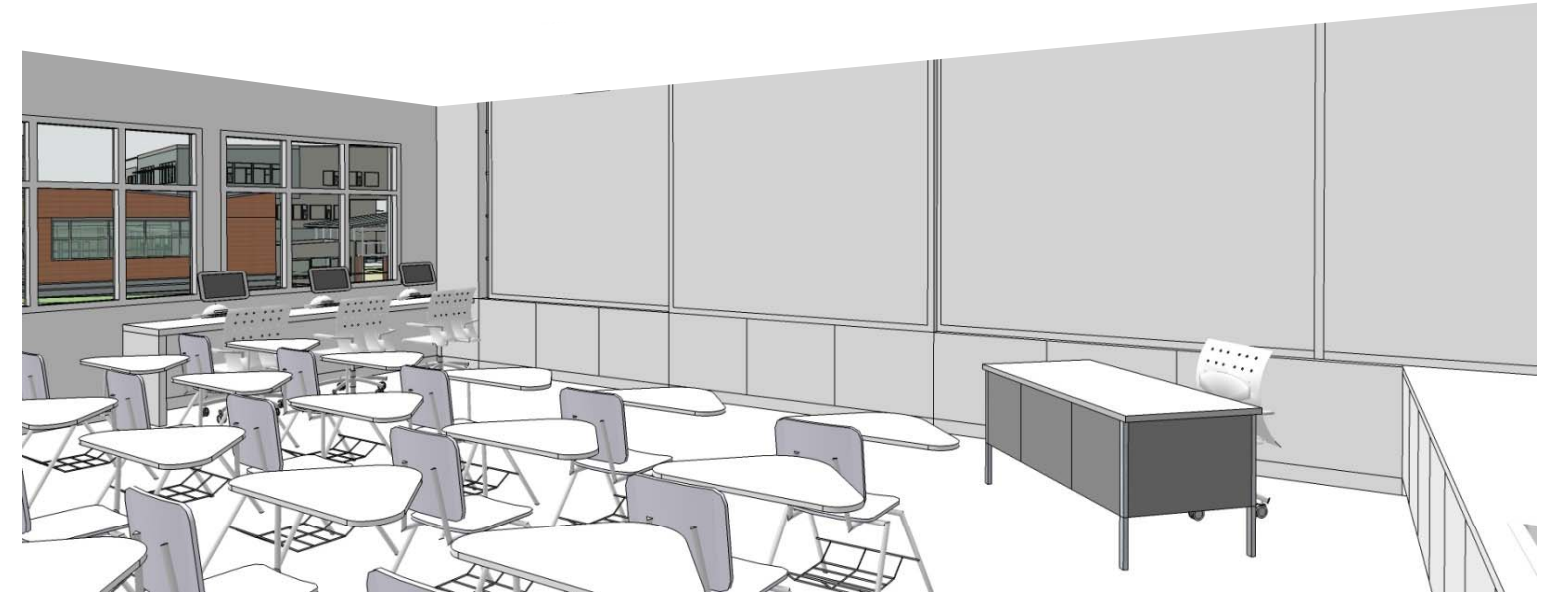
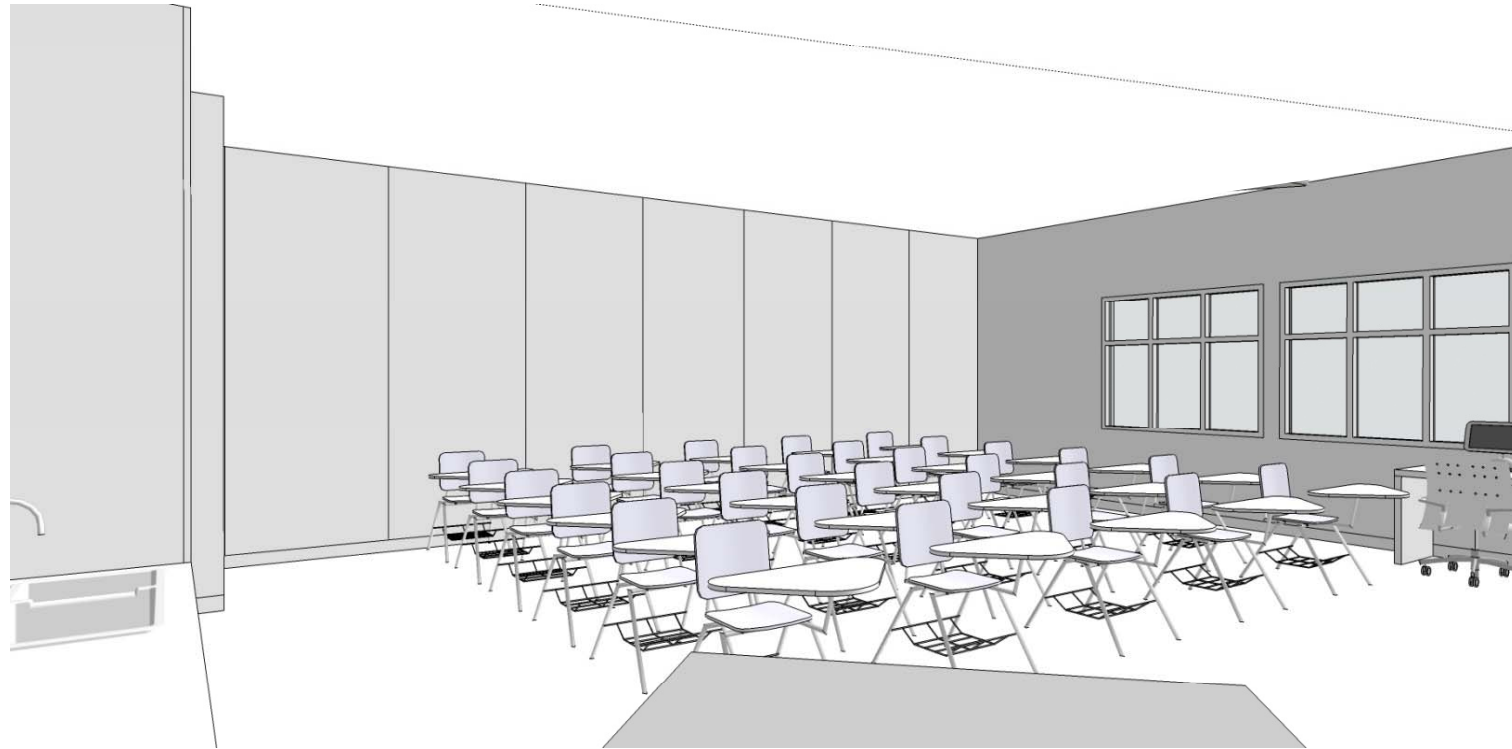




**SCHOOL MULTI-USE ROOM**



**STAFF ENGAGEMENT– DIGITAL MOCK-UPS**

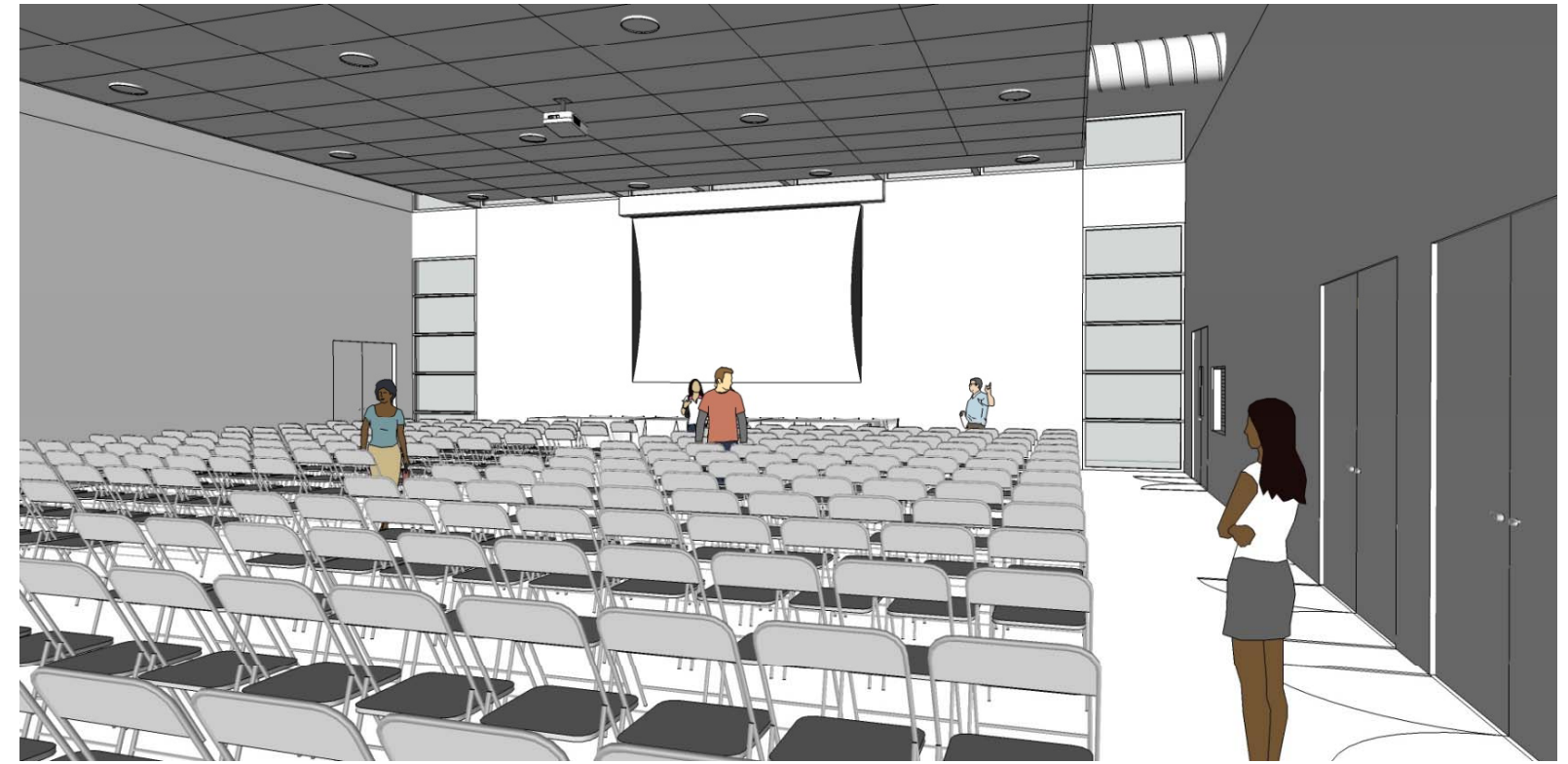


K-12 CLASSROOMS



STAFF ENGAGEMENT – DIGITAL MOCK-UPS



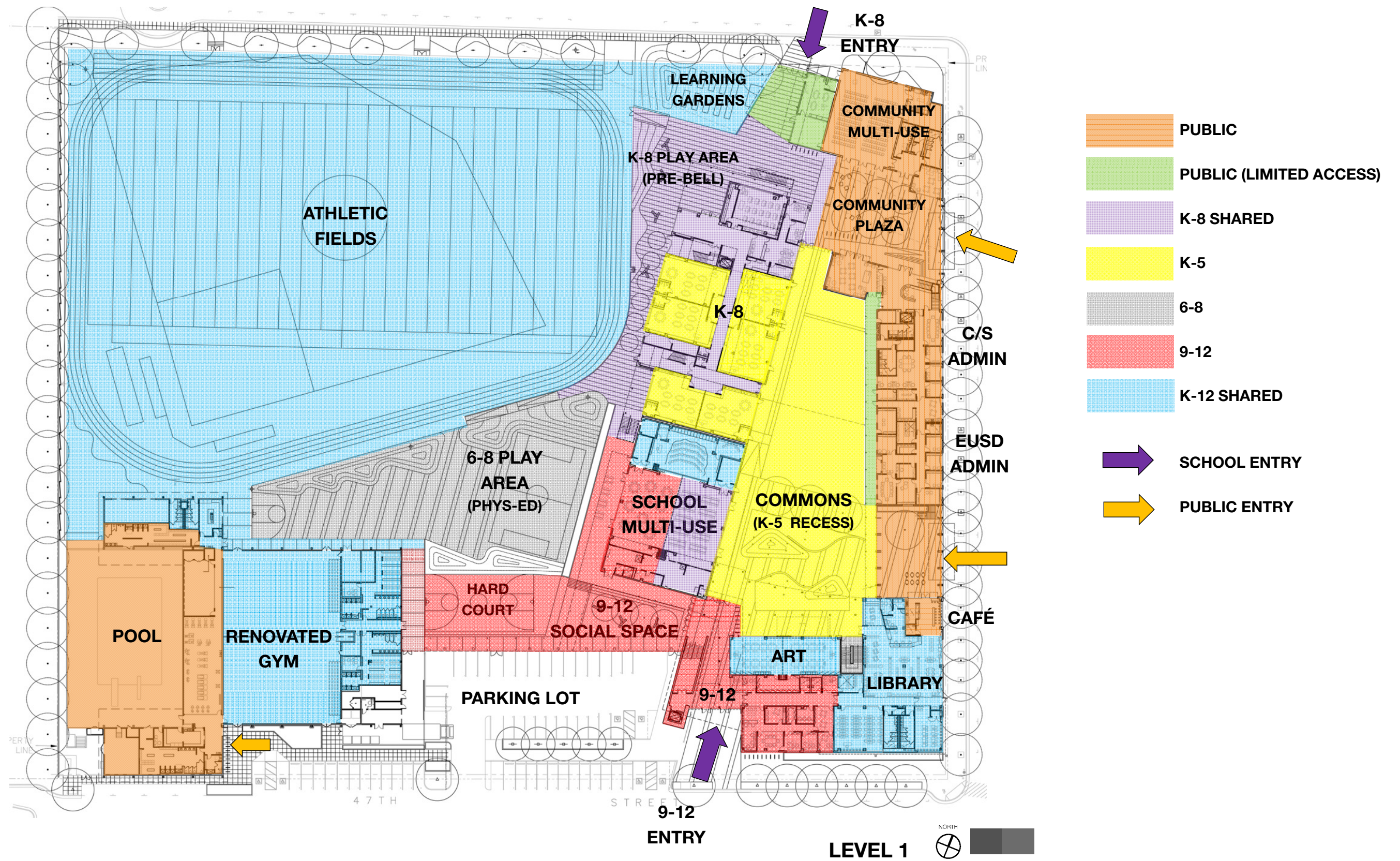


**COMMUNITY SERVICES**

# ECCL – Flexibility in Design

1. Operational Options: open/closed; school/community
2. Partnerships: trading program delivery for space
3. Virtual Sharing: web; wi-fi networks
4. Shared Use/ Time of Use: usage transformations \*
5. Spatial Adaptability: configuration modifications \*
6. Program Space Allocations: Phase 1 and Phase 2 \*



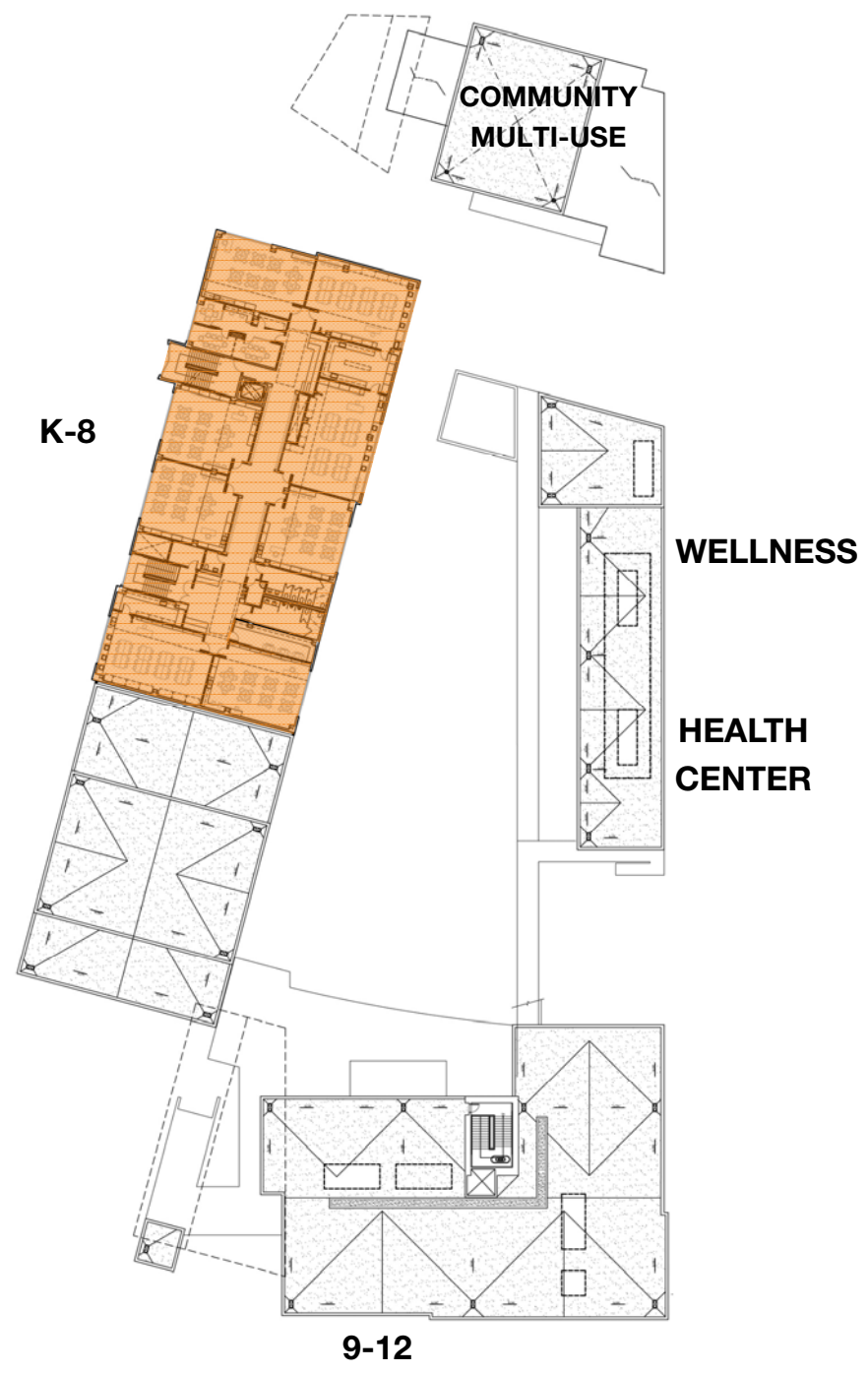




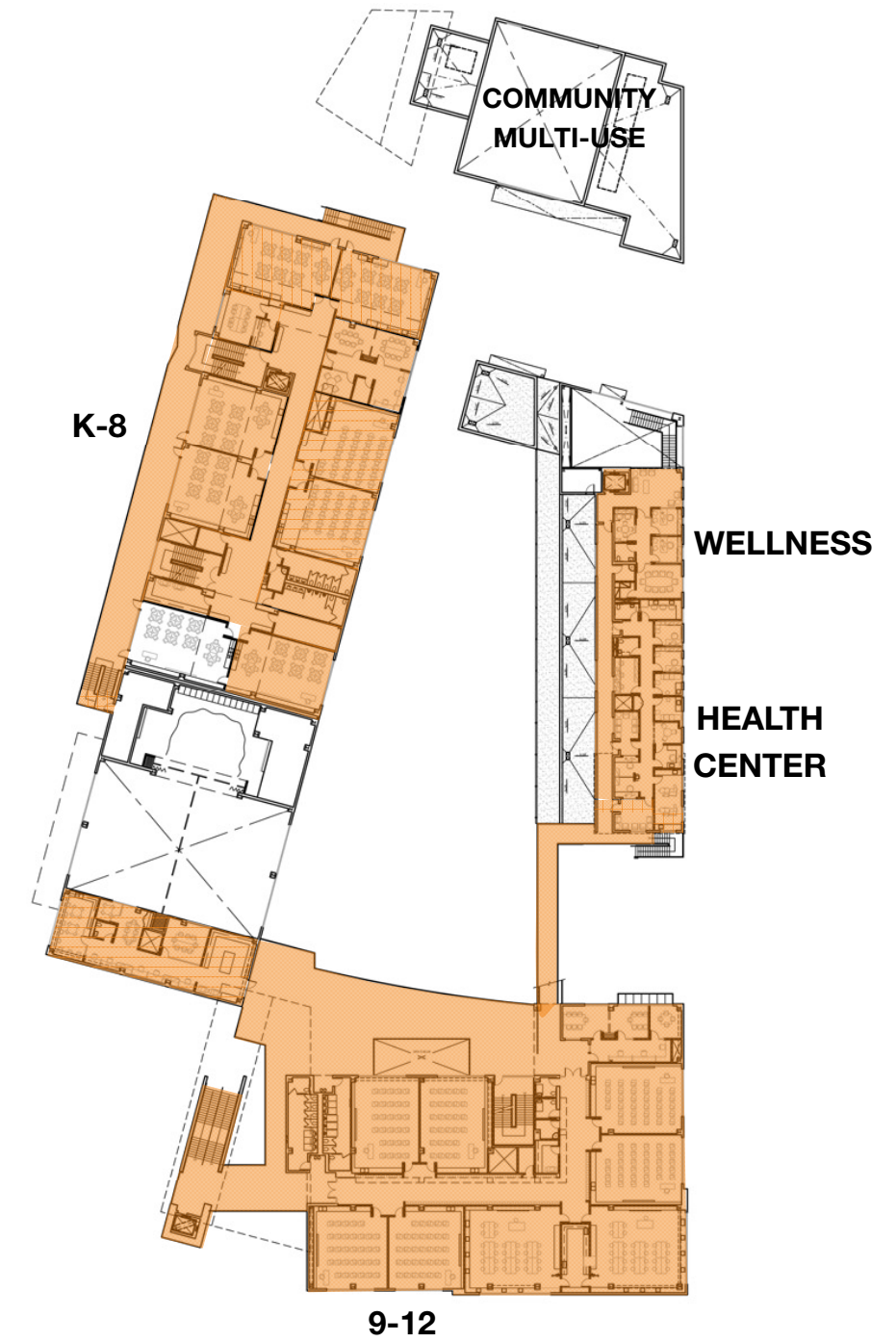






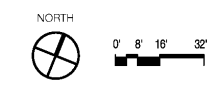


**LEVEL 3**



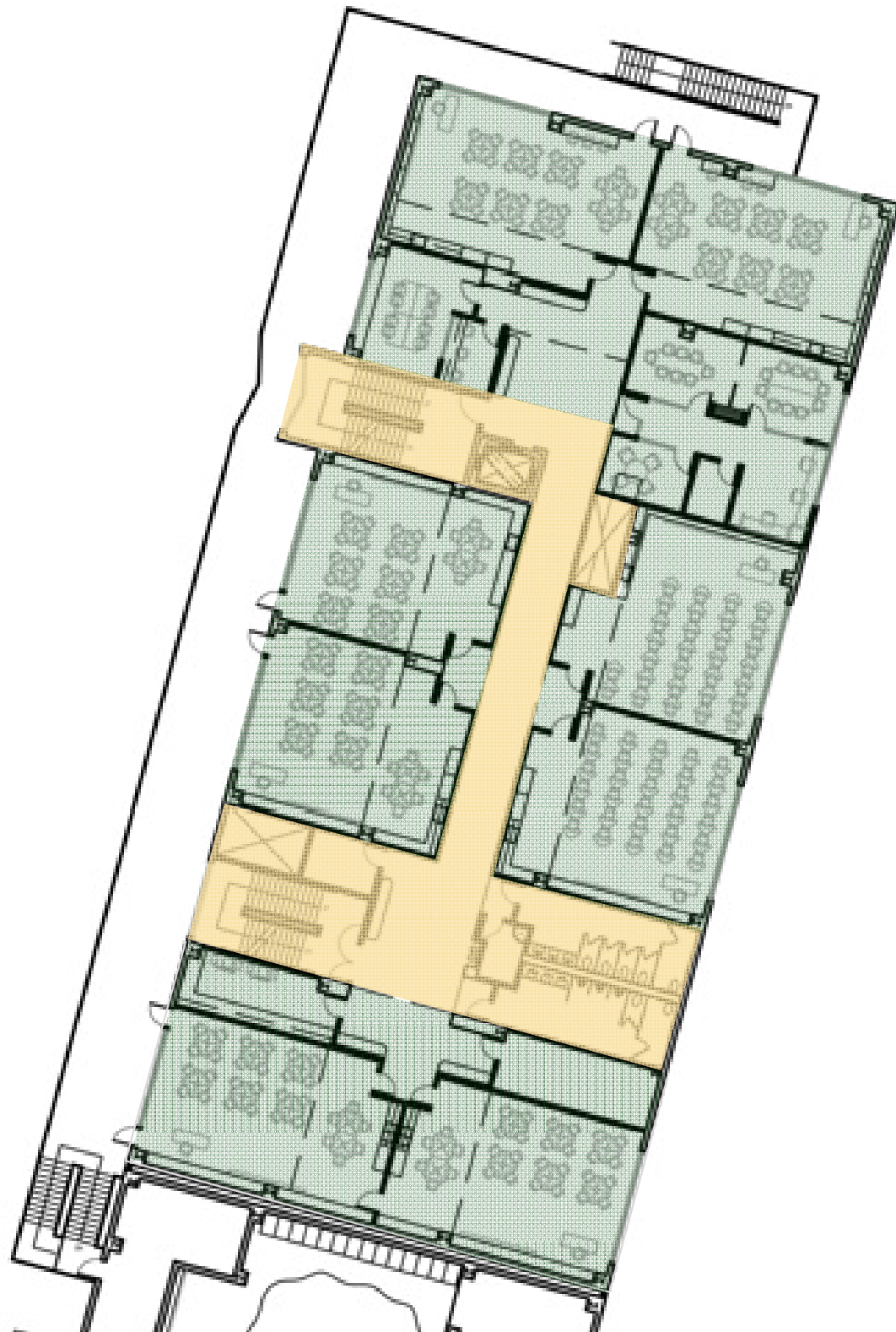
**LEVEL 2**

 **PUBLIC**



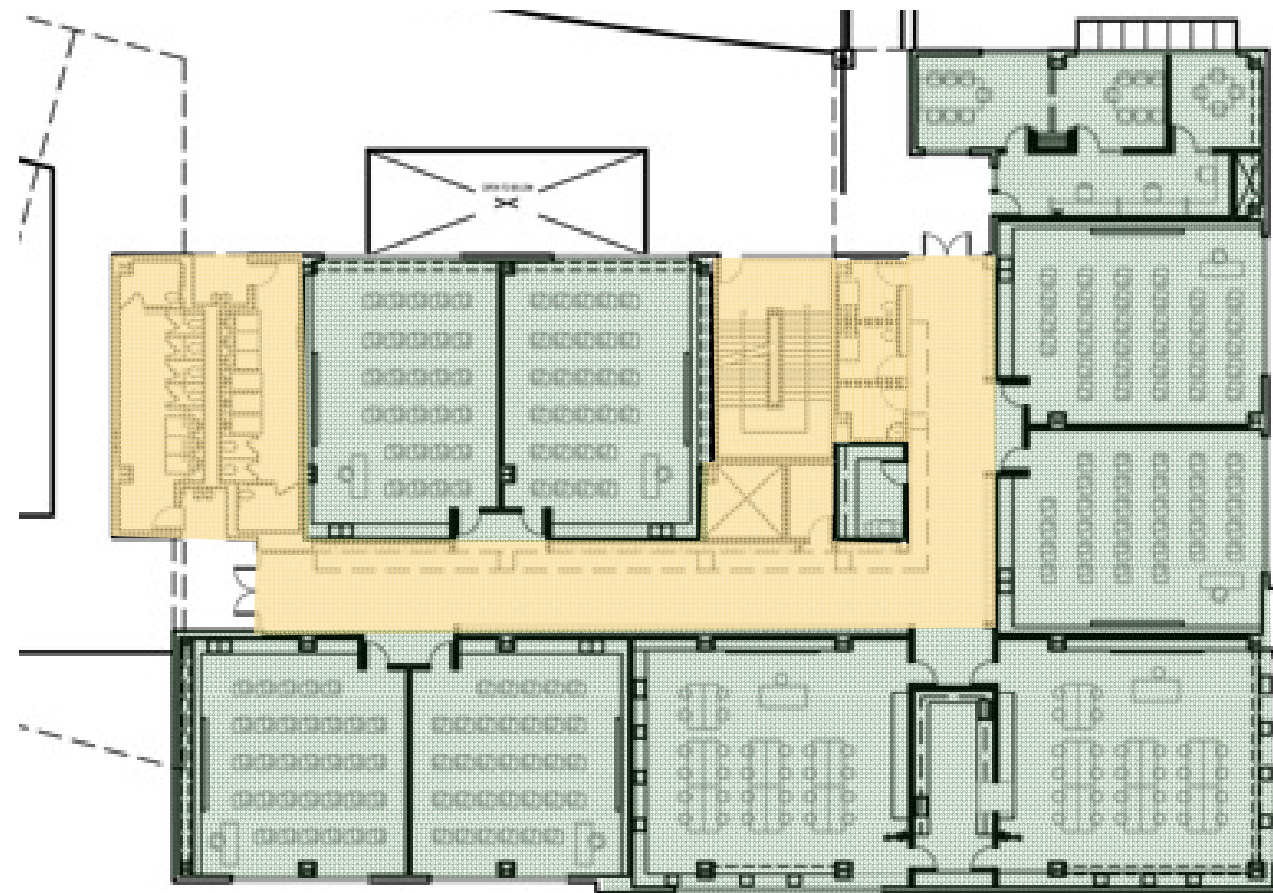
# SITE USE DIAGRAM – NON-SCHOOL HOURS





LEVEL 2 – K-8 WING

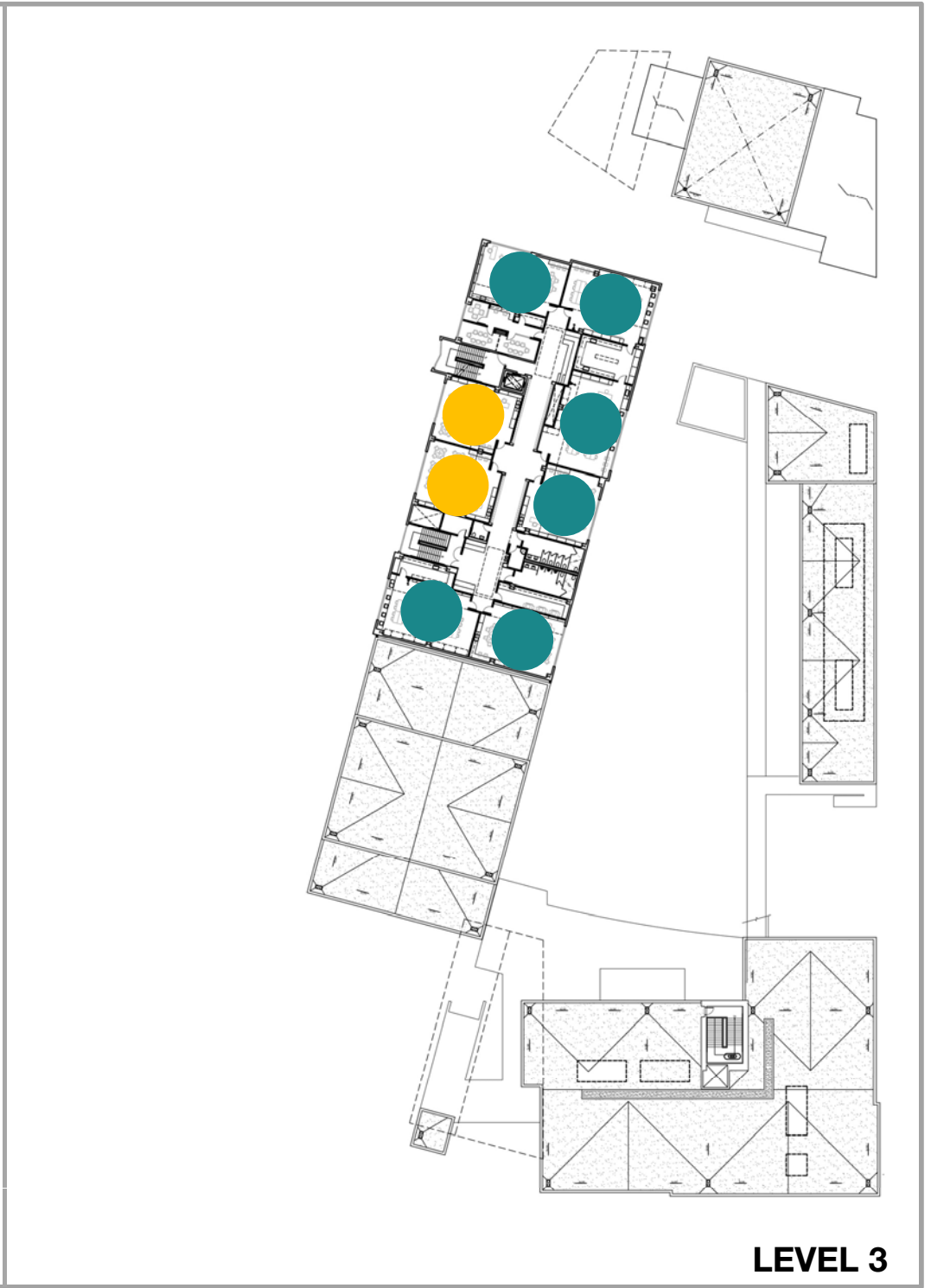
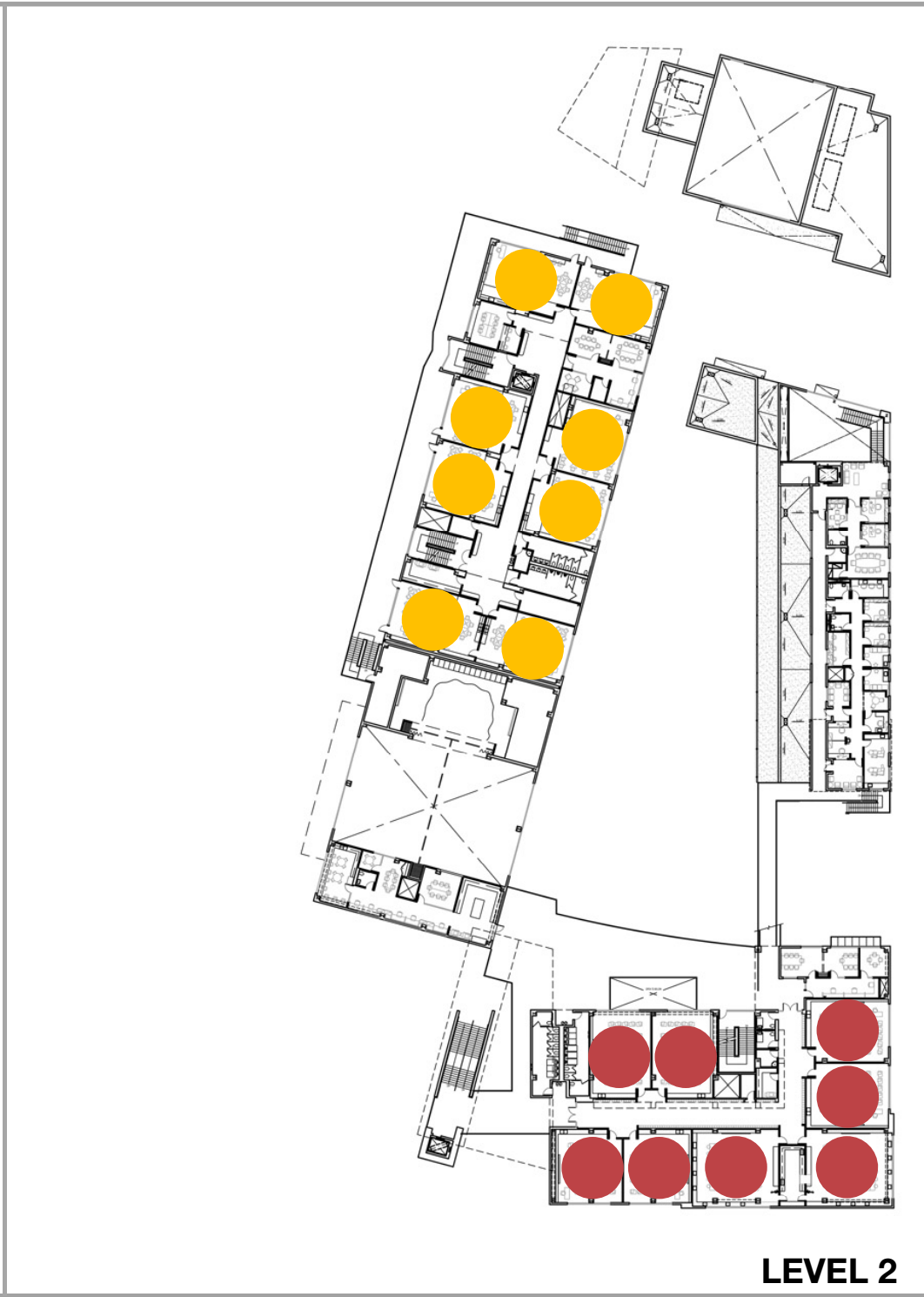
- CORE: CIRCULATION & SERVICE
- FLEX ZONE



LEVEL 2 – 9-12 WING





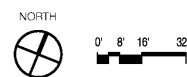
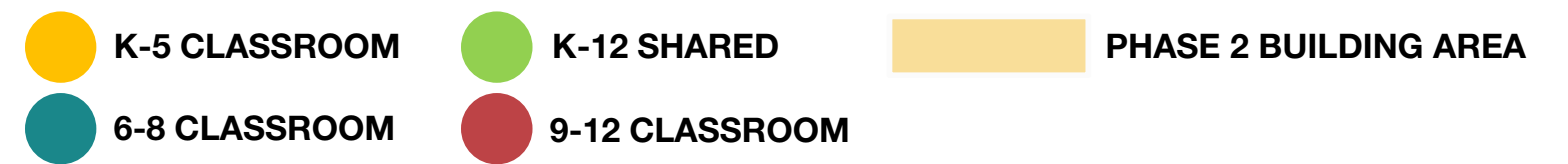
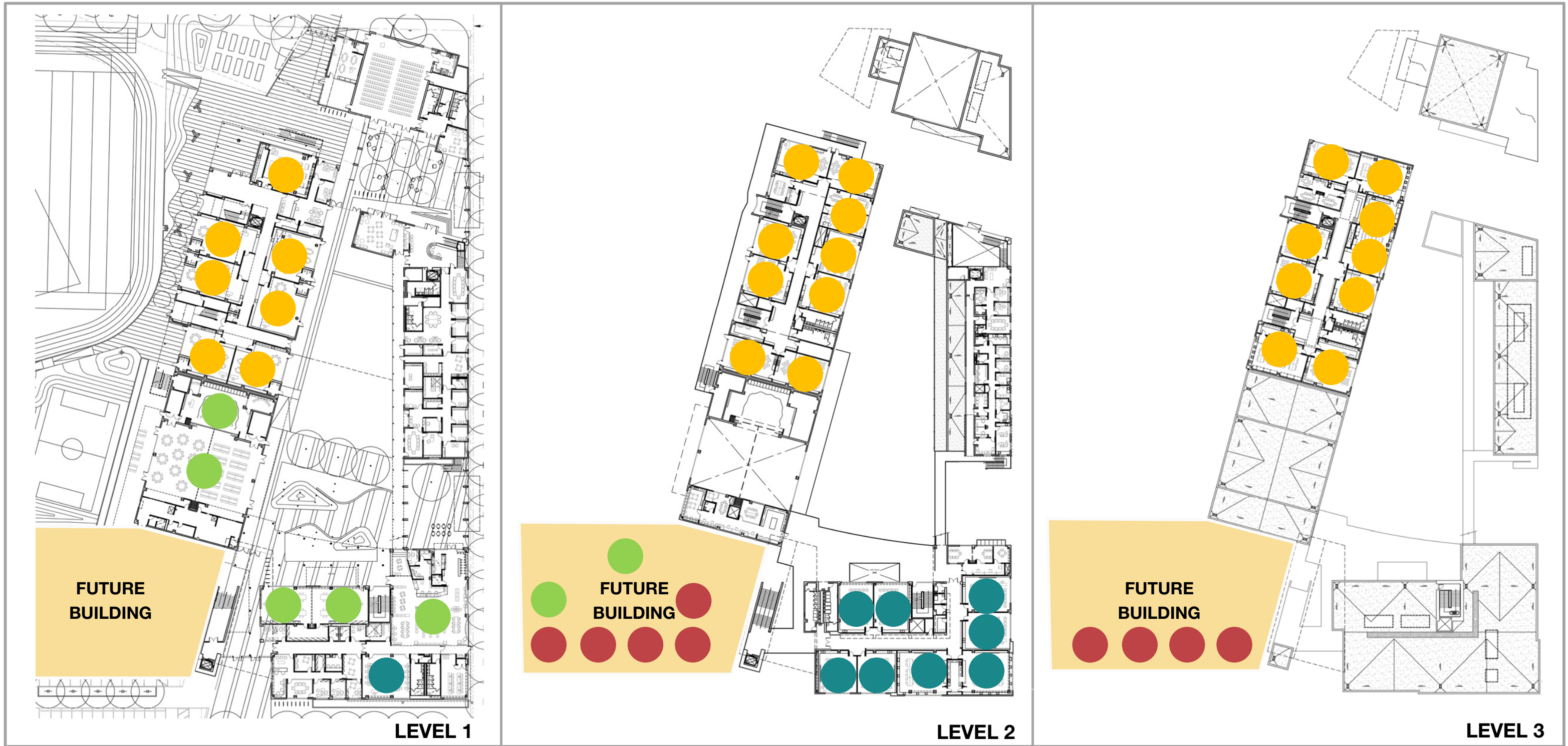


- K-5 CLASSROOM
- K-12 SHARED
- 6-8 CLASSROOM
- 9-12 CLASSROOM

# PROGRAM ALLOCATION – PHASE 1







# PROGRAM ALLOCATION – PHASE 2: New High School Space

# School Board Meeting

03.13.13

## Design Development Update

### DISCUSSION